

Installation Instructions for Axial Fans for Bathroom, Toilets, Utility Rooms and Kitchens

AXS100, AXS100SELV, AXS125, AXS150 & AXSK

READ ALL INSTRUCTIONS BEFORE COMMENCING INSTALLATIONS

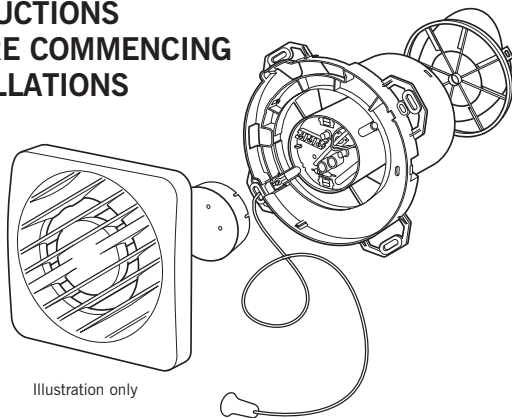


Illustration only

Warning: This appliance can be used by children aged from 8 years and above and persons with reduced physical, sensory or mental capabilities or lack of experience and knowledge if they have been given supervision or instruction concerning use of the appliance in safe way and understand the hazards involved. Children shall not play with the appliance.

Where an open-flued oil or gas-fuelled appliance is installed, precautions must be taken to avoid a back-flow of gases into the room.

When installing wall mounted fans, ensure that there are no buried cables or pipes in the way. It is recommended that this fan is mounted > 1.8m above floor level.

The fan should not be sited where it would be subject to a direct source of heat in excess of 40°C.

Observe appropriate safety precautions if working on steps or ladders. Wear eye protection when breaking out wall or window materials, etc.

A clearance of 75mm to be allowed on at least one side of the fan for the removal of the internal grille.

AXS100SELV fans shall only be installed by using the supplied Safety Extra Low Voltage (SELV) controller.

Always isolate fan from mains supply before cleaning. Do not use solvents to clean this fan.

Cleaning and user maintenance shall not be made by children without supervision.

To disassemble the unit, disconnect from mains supply and use a screwdriver to segregate the electronic components and motor from the plastic housing. Dispose items in accordance with WEEE.

WEEE Statement

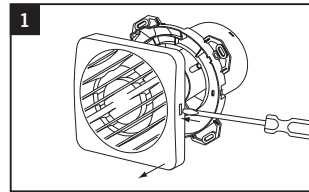
This product may not be treated as household waste. Instead it should be handed to an appropriate collection point for the recycling of electrical and Electronic equipment.

For more detailed information about the recycling of this product, please contact your local council office or your household waste disposal service.

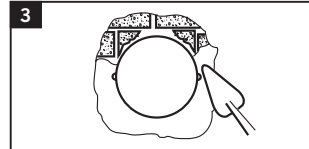


WALL MOUNTING

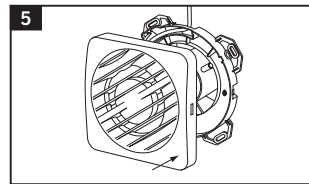
(Using ED wall duct and EG external grille, 100mm and 150mm only)



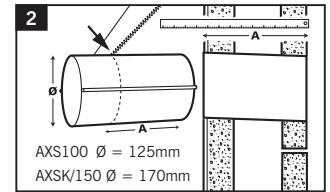
Remove one piece Internal Grille using screwdriver. Push in to free catch then twist to remove grille.



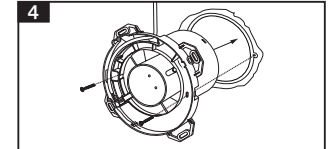
Fill in any gaps with mortar or foam and make good internal and external walls. Make sure that ducting remains circular and screw holes are horizontal.



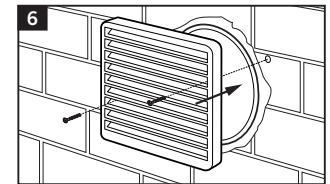
Replace internal grille ensuring no wires are trapped.



Cut the duct to width of the plasterboard or tiled wall with slight fall to exterior. (Make provisions for cable).

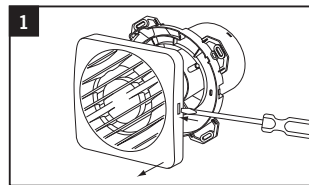


Using No 8 screws, secure fan body to ducting first making sure back draught shutter is fitted, if required, and electrical cable passes through as appropriate. Wire fan (See wiring details).

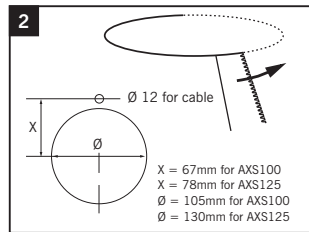


Screw the protective wall grille over the external duct opening.

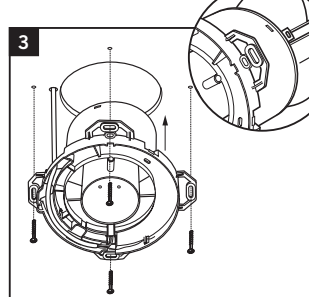
CEILING MOUNTING



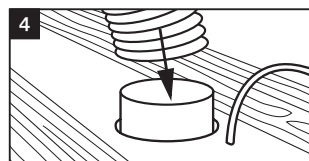
Remove one piece Internal Grille using screwdriver. Push in to free catch then twist to remove grille.



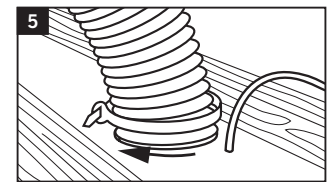
Cut an opening through the ceiling for the fan and electrical cable.



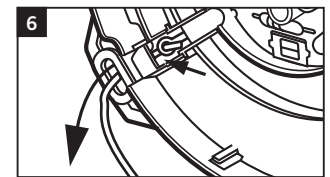
Secure to ceiling using suitable screws first making sure backdraught shutters are removed but shutter spider is left in position. Wire fan (See wiring details).



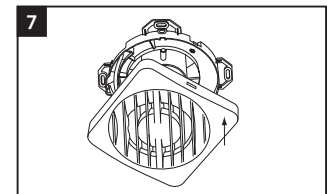
Place flexible ducting over the spigot of the fan.



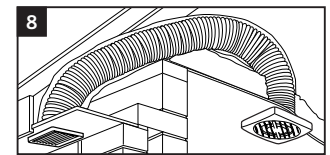
Fit ducting to spigot using ties supplied, making sure impeller rotates freely. Maximum duct length to comply with Building Regulations:
AXS100: 3m
AXSK/150: Wall mounting only



Detach the cord from the PCB by pulling the cord through the pull cord's link.

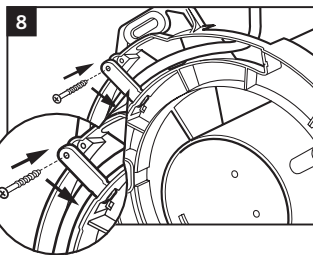
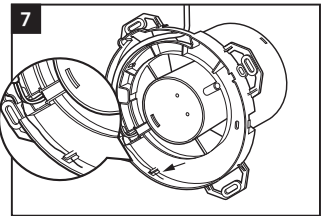
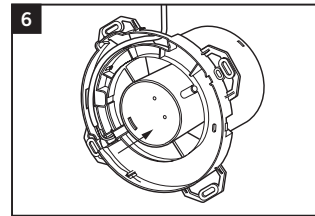
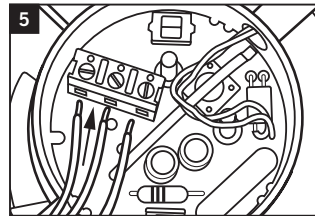
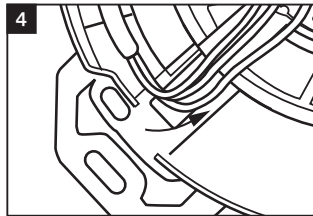
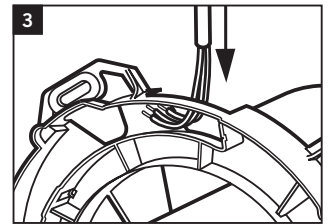
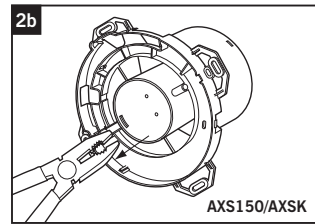
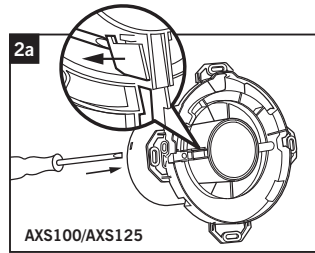
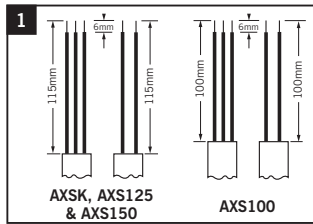


Replace internal grille ensuring no wires are trapped.



Do not terminate via a tile vent.

WIRING DETAILS



AXS100/AXS125 Fans – before commencing wiring, carefully remove safety cover with a screwdriver by gently prying open 'hook mechanism' (inset diagram 2a) and pulling off cover. After fitting do not forcibly remove this cover. Before replacing centre safety cover, after wiring, make sure the pull cord link is located correctly behind the PCB as shown (inset diagram 5). Refit safety cover on completion of wiring by pushing home.

Note: If cable is supplied with earth core this can be cut to the same length and 'parked' as shown in diagram 7.
If fixed flat cable is used or flexible cable which is secured with suitable wall fixings the cable clamp is not required.
If flexible cable is used without suitable fixings use cable clamp and screw supplied loose with the fan (diagram 8).

For SELV fans only
Maximum cable length between fan and controller:

Conductor Size	Maximum length
0.75mm ²	2.3m
1.00mm ²	3.0m

WIRING DIAGRAMS

Warning: Installation or disconnection must be carried out by a qualified Electrician and all wiring must conform to IEE or local regulations.

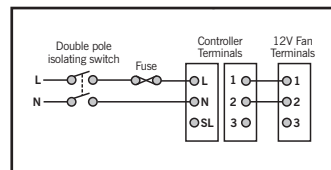
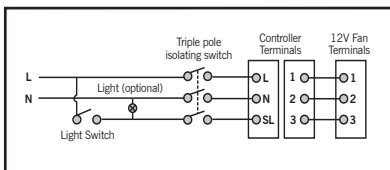
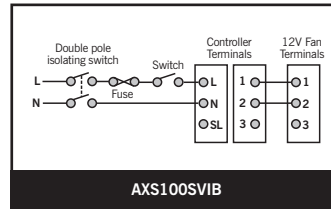
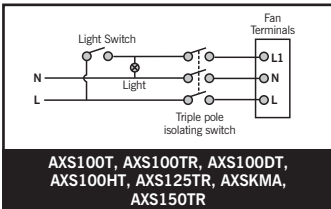
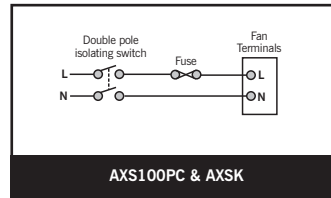
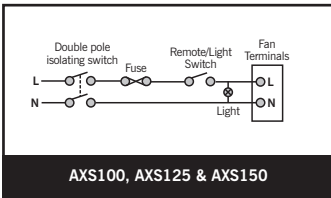
Isolate electricity supply before starting work.

- The fans are double insulated and do not require an earth connection.
- The fans must be connected to a double pole isolating switch having contact separation of at least 3 mm.
- When supplied from a 6 amp lighting circuit no local fuse is required.

Specification: □ 230V~50Hz.

Consumption:	AXS100	16W
	AXS100SVI	19W
	AXS125	28W
	AXSK/150	29W

Cable Sizes:	
Fixed flat wiring	Flexible round wiring
2 core 1mm ²	2 core 0.75mm ²
3 core 1/1.5mm ²	3 core 0.75mm ²



SELV Fans External wiring for operation in parallel with room light or remote switch with or without pull cord

SELV Fans External wiring for pull cord only

SELV FANS ONLY TO WIRE THE CONTROLLER

Install SELV controller using the two fixing holes, in a suitable location outside of the room where the AXS100SELV fan is installed.

The location should be as such that air can circulate around the SELV controller and it should never be covered.

The distance between the fan and SELV controller should be kept to a minimum and ideally not greater than 3.0m.

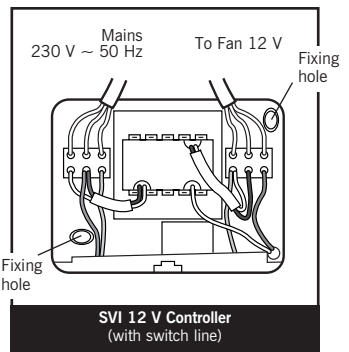
Must only be wired using the controller supplied with the fan.

Remove the electrical cover.

Make all connections to the connector blocks.

Note: Mains cable must be fixed back to the wall using appropriate cable cleats.

Replace electrical cover.



SENSOR/TIMER ADJUSTMENTS

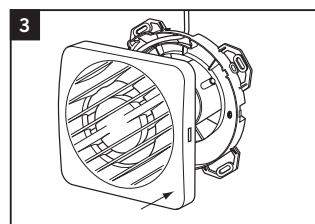
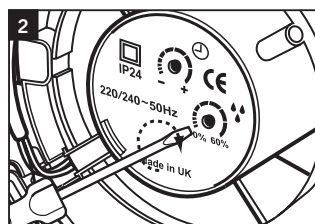
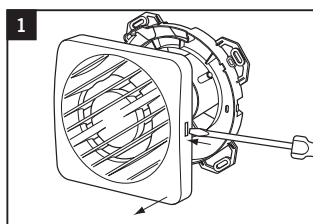
Note: Isolate from mains before commencing work/adjusting timer.

The removal of the wiring cover and setting of temperature and humidity controls may only be carried out by a Qualified Electrician in accordance with local regulations.

- Remove one piece Internal Grille using screwdriver. Push in to free catch then twist to remove grille.
- The timer is pre-set but may be adjusted by using a screwdriver and rotating clockwise to increase time and anti-clockwise to reduce time overrun.

The humidity sensor is pre-set but may be adjusted by using a screwdriver and rotating clockwise to increase the sensitivity and anti-clockwise to reduce the sensitivity.

- After adjustments replace Internal Grille by pushing home.



TO CLEAN OR SERVICE FAN

The only servicing required with this fan is the removal and cleaning of the front grille and should be conducted by a technically competent person.

- Remove one piece Internal Grille using screwdriver. Push in to free catch then twist to remove grille.
- The fan may now be cleaned using a brush or damp cloth. DO NOT IMMERSE IN WATER.
- After cleaning replace Internal Grille by pushing home.

Warning: Always isolate fan from mains supply before cleaning. Do not use solvents to clean this fan.

