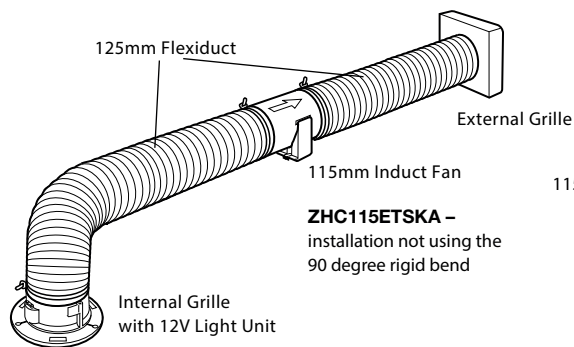
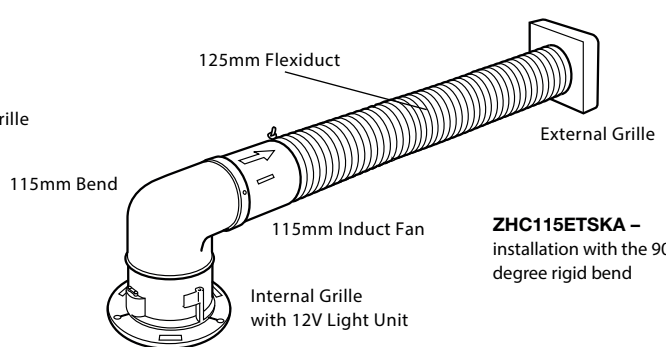


ZHC115ETSKA – Installation Instructions

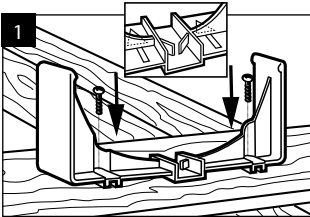


ZHC115ETSKA –
installation not using the
90 degree rigid bend

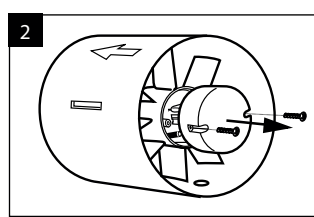


ZHC115ETSKA –
installation with the 90
degree rigid bend

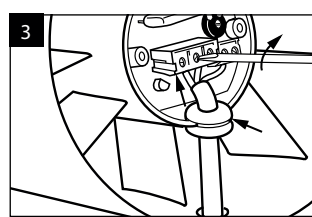
ZHC115ETSKA – without 90 degree rigid bend



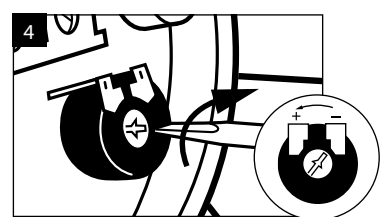
Secure fan holder to a joist using two No. 6 screws.



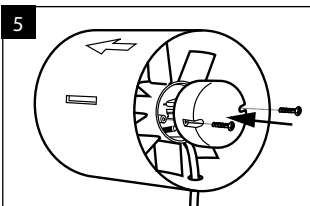
To wire the induct fan, first remove the wiring cover.



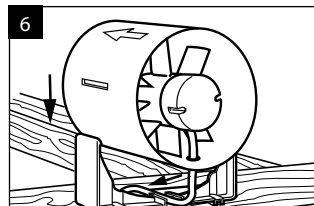
Wire up the fan according to the diagrams on back page.



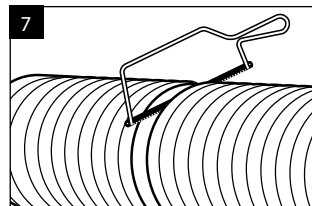
Adjust timer. The timer is adjustable between 1 & 25 minutes. It is factory set at midpoint.



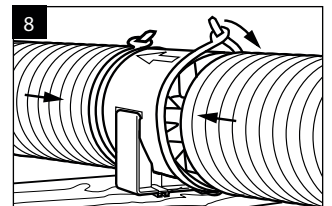
Secure the cover back onto the fan.



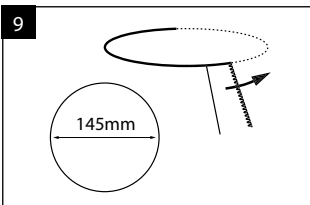
Clip fan into fan holder making sure it is secure.



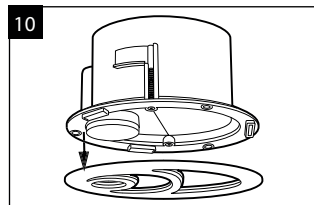
Cut the flexiduct to the lengths required.



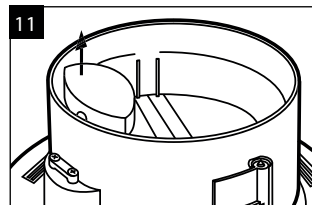
Secure ducting to the fan using the ties provided.



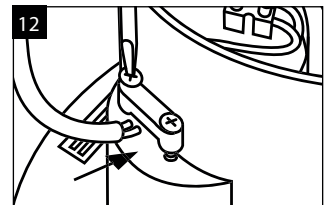
Cut a hole in the ceiling of the room where the light unit is to be fitted and thread through the wiring for the light unit.



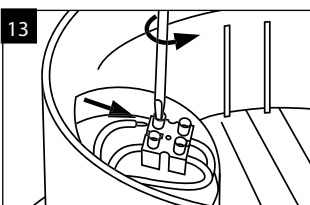
Unclip internal grille from light unit.



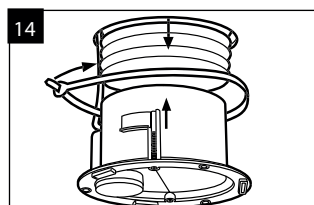
To wire the light unit, first remove the wiring cover.



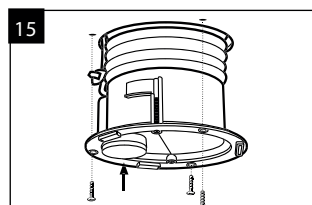
Loosen the securing clamp on the side of the unit and thread Low Voltage LED Driver leads through the hole and resecure clamp.



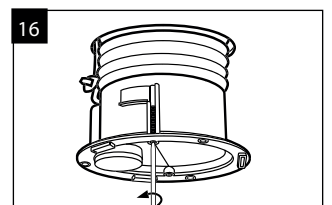
Wire the unit according to diagram on back page. Replace wiring cover.



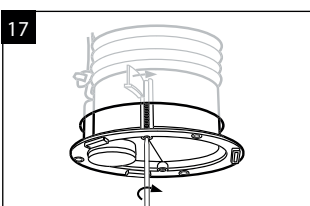
Push one end of the flexiduct through the ceiling and attach it to the light unit using one of the ties provided.



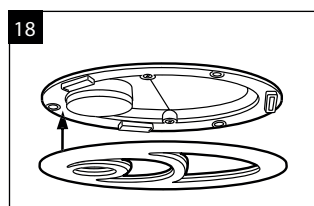
Mark and plug three holes using the three fixing holes on the light unit. Secure by using three No 6 countersunk screws.



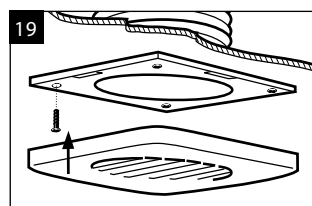
Alternatively use the fixing fingers on the unit. These are used by first slightly unscrewing the two long screws provided so that the fixing fingers are loose.



Twist the fixing fingers around so that they stick outwards. Then tighten them against the ceiling (do not overtighten). To fit lamp – see back page.

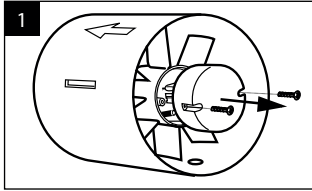


Replace internal grille onto light unit body.

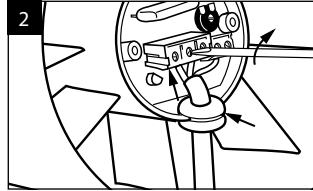


Prepare suitable hole through soffit and fix grille back plate using plugs and screws provided. Snap on external grille.

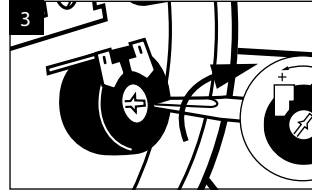
ZHC115ETSKA – with 90 degree rigid bend



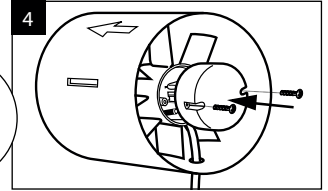
To wire the induct fan, first remove the wiring cover.



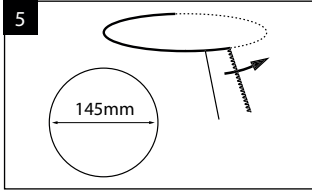
Wire up the fan according to the diagrams on back page.



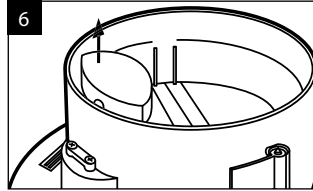
Adjust timer. The timer is adjustable between 1 & 25 minutes. It is factory set at midpoint.



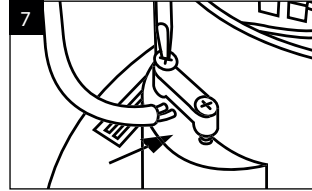
Secure the cover back onto the fan.



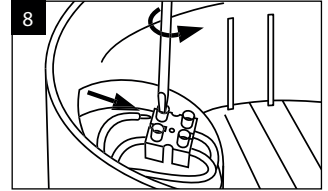
Cut a hole in the ceiling of the room where the light unit is to be fitted and thread through the wiring from the transformer.



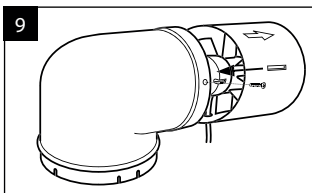
To wire the light unit, first remove the wiring cover.



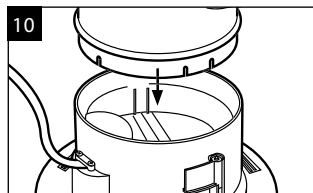
Loosen the securing clamp on the side of the unit and thread Low Voltage LED Driver leads through the hole and resecure clamp.



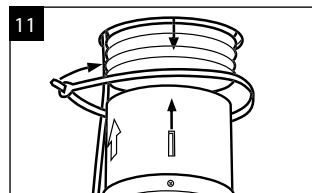
Wire the unit according to diagram below. Replace wiring cover.



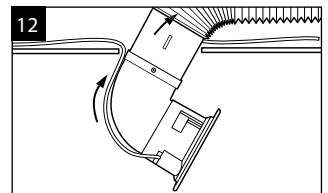
Secure induct fan to 90° bend using the self tapping screws provided (use a 2.5mm drill bit).



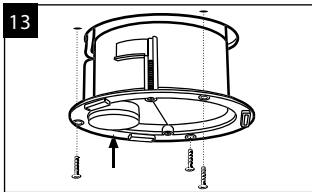
Push one end of the 90° bend onto the light unit and click fit.



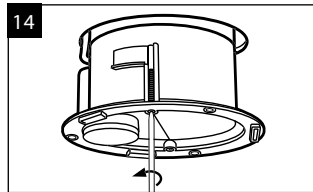
Push one end of the flexduct through the ceiling and attach it to the fan using one of the ties provided.



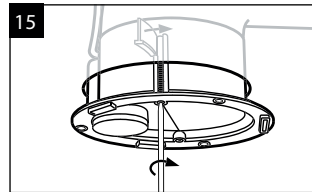
Push the attached fan and 90° bend up through the hole. Make sure the wiring is not impeded. Unclip internal grille.



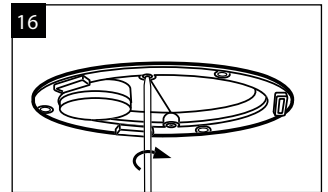
Mark and plug three holes using the three fixing holes on the light unit. Secure by using three No. 6 countersunk screws.



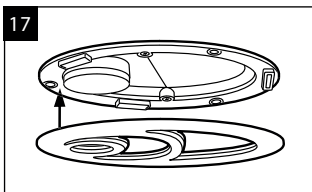
Alternatively use the fixing fingers on the unit. First slightly unscrew the two long screws so that the fixing fingers are loose.



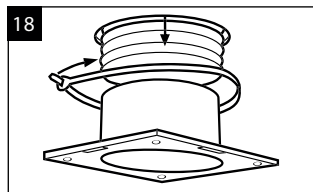
Push light unit through the hole in the ceiling and twist the fixing fingers around so that they stick outwards.



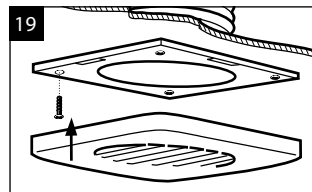
Then tighten the fixing fingers against the ceiling (do not overtighten). To fit lamp – see below.



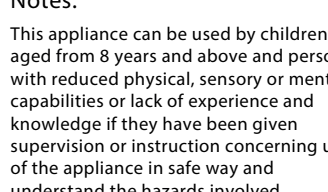
Replace internal grille onto light unit body.



Prepare suitable hole through wall or soffit. Push through the unattached end of the flexduct and attach it to the grille backplate using one of the ties provided.



Fix grille back plate using plugs and screws provided. Snap on external grille.



Notes:

This appliance can be used by children aged from 8 years and above and persons with reduced physical, sensory or mental capabilities or lack of experience and knowledge if they have been given supervision or instruction concerning use of the appliance in safe way and understand the hazards involved. Children shall not play with the appliance.

Where an open-flued oil or gas-fuelled appliance is installed, precautions must be taken to avoid a back-flow of gases into the room.

The units should not be sited where it would be subject to a direct source of heat in excess of 40°C.

Once fitted into ceiling void or loft space do not cover light body, fan or LED Driver with any insulating materials.

Minimum void height when fitting into ceiling space and minimum distance for light is 200mm.

Cleaning the light unit:

Always isolate fan from mains supply before cleaning. Do not use solvents to clean this fan. Cleaning and user maintenance shall not be made by children without supervision.

Remove the internal grille by pulling down, wash in warm water. The lamp body may be cleaned using a brush or damp cloth, before pushing the grille back onto the body.

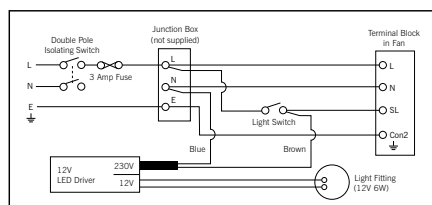
Wiring Instructions:

WARNING: Isolate electricity supply before starting work.

- Installation or disconnection must be carried out by a qualified Electrician and all wiring must conform to IEE Wiring or local Regulations. Fan must only be connected using flexible supply cord.
- The light unit is double insulated and does not require an earth connection.
- The units must be connected to a double pole isolating switch having contact separation of at least 3mm at each pole and fitted with a 3 amp fuse.
- The LED Driver must be sited within a dry location and not within reach of a person using a bath or shower nor within a shower cubicle/enclosure.
- Connect only one light unit per LED Driver.

WEEE Statement

This product may not be treated as household waste. Instead it should be handed to an appropriate collection point for the recycling of electrical and Electronic equipment. For more detailed information about the recycling of this product, please contact your local council office or your household waste disposal service.



ZHC115ETSKA wiring diagram

LED Lamp Specification:

SELV 12V~50Hz 6W LED Lamp, Type MR16 [GU5.3]

LED Lamp fitting and replacement

WARNING: Isolate electricity supply before starting work.

- Remove the internal grille by pulling down.
- Remove lamp lens (and old LED lamp if replacing) by pulling down.
- Fit LED lamp by pushing upwards into the lamp holder.
- Push up LED lamp lens and internal grille.