

# Additional Ancillaries

Complete your system requirements with our comprehensive portfolio

## Unity picture frame adaptor

**Material:** White satin finish, ABS plastic

### Description:

Designed to provide a perfect aesthetic finish when the Unity fan is used as a replacement in existing 150mm wall installations.

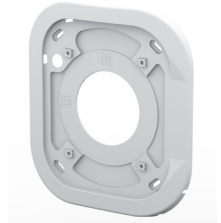


## Omnique picture frame adaptor

**Material:** White satin finish, ABS plastic

### Description:

Designed to provide a perfect aesthetic finish when an Omnique fan is used as a replacement in existing 150mm wall installations.



### Unity picture frame adaptor key data

Product code	Width	Height	Depth
PFACV2	246mm	246mm	22mm

### Omnique picture frame adaptor key data

Product code	Width	Height	Depth
PFAOF100	256mm	287mm	23mm

## Condensation trap

**Material:** ABS plastic

### Description:

Simple to install and handle, this cost effective solution removes condensation risks from unheated areas and is specifically designed for MVHR applications.



## Insulated duct wrap

### Material:

Aluminium foil facing  
Glass mineral wool insulation

### Description:

Ideal for use on any diameter or length of duct, this strong, flexible and easy to handle insulation roll offers high levels of thermal performance whilst reducing installation time and cost.



### Condensation trap models and key data

Product code	Ø (mm)
GCT100	100
GDA2	110
GCT125	125
GCT150	150

### Insulated duct wrap models and key data

Product code	Width	Length	Depth
IDW25	1.2m	18m	25mm
IDW40	1.2m	12m	40mm

## Waterless condensate trap

**Material:** ABS Plastic

### Description:

An innovative, hygienic, self-sealing waste valve for use in the vertical installation of MVHR units.



## Airflow meter

**Housing material:** ABS plastic

### Description:

A compact instrument for measuring volumetric flow rates at inlets/outlets by means of an integrated 100mm rotating vane with temperature probe.



### Waterless condensate trap key data

Product code	Ø (mm)
GCT32	32

### Airflow meter key data

Product code
AFM1