

Fastfix

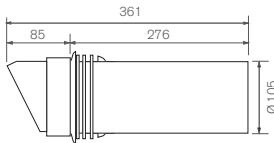
PVC fast fix ducting system



Physical specification

All measurements in millimetres unless otherwise indicated

Ducting Material: Rigid PVC



Features and benefits

- ▶ Comprises 100mm PVC duct with external wall duct seal and external grille
- ▶ Designed to save time and improve safety by allowing installations to be completed internally
- ▶ Seal between external grille and duct provides watertight seal

Installation

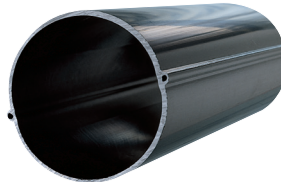
Push through 117mm diameter core drilled hole with external grille situated to outside of building.

Fastfix models

Brown external grille	FF100B
White external grille	FF100W

Easyfix

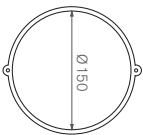
PVC easy fix duct



Physical specification

All measurements in millimetres unless otherwise indicated

Materials: Rigid black PVC to BS4514



Features and benefits

- ▶ Efficient one-visit system designed to save installation time and storage cost
- ▶ Integral screw holes ensuring rapid fixing and secures fan direct to duct
- ▶ No need to drill and plug fixing holes
- ▶ Simply cut on-site to length required for installation

Installation

Cut duct to the length required. Install and make good. Fix fan and grille direct to duct.

ED1 hole size required:
Ø 125mm

ED150 hole size required:
Ø 170mm

Easyfix models

Ø 100mm, length 375mm	ED1
Ø 150mm, length 375mm	ED150