

# Zehnder ComfoFresh Flat 51

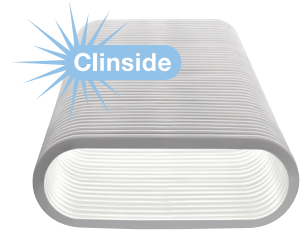
Semi-rigid ducting system

## Features and benefits

- Crush resistant
- Flexible up to 90°
- No sealants required
- Easy to clean
- Easy to cut

## Model options

Zehnder ComfoFresh Flat 51:  
51mm x 138mm  
Available in 3 lengths  
(2m, 20m & 50m rolls)



## Installation

- 1 Cut the pipe to the required length
- 2 Place the O-ring in the second groove in from the end
- 3 Apply lubrication to the O-ring
- 4 Slide and fix the pipe onto the connecting piece
- 5 Push the fixing slide in to the end

<b>Zehnder ComfoFresh Flat 51</b> 2m roll 990 328 080 20m roll 990 328 002 50m roll 990 328 063 	<b>6 port manifold</b> 6 x Flat 51 connectors, includes 6 x O-rings and locking slides 990 322 030 	<b>4 port manifold</b> 4 x Flat 51 connectors, includes 4 x O-rings and locking slides 990 322 031 
<b>4 port manifold</b> 4 x Flat 51 ports, 1x rigid twin duct connector 990 328 823  <p><i>includes 4 x O-rings and locking slides</i></p>	<b>Manifold connector</b> Connects 6 port manifold to Ø 160mm duct 990 322 037 	<b>O-ring – 10 pieces</b> For sealing Flat 51 990 328 352 
<b>End cap – 10 pieces</b> For protecting Flat 51 during construction 990 328 252 	<b>Locking slide – 20 pieces</b> For connecting Flat 51 990 326 022 	<b>Adjustable airflow regulator</b> 990 322 015 
<b>Mounting bracket – 10 pieces</b> For supporting Flat 51 990 322 016 	<b>Mounting bracket – 10 pieces</b> Fixes and locks Flat 51 from M8 stud 990 322 017 	<b>Connector</b> Includes 2 x O-rings and locking slides 990 322 014 



For information about **GIP, Guaranteed Installed Performance** see page 24

**Horizontal 90° bend**

Includes 2 x O-rings and locking slides

990 322 012



**Vertical 90° bend**

Includes 2 x O-rings and locking slides

990 322 011



**Connecting junction**

Connects Flat 51 to ComfoTube 90/75mm

990 322 013



Includes 2 x O-rings and locking slides

**90° connecting junction**

Vertical 90° bend for connecting Flat 51 to ComfoTube 90mm

990 322 046



Includes 2 x O-rings and locking slides

**90° rectangular grille housing**

Wall, floor or ceiling installation, includes, O-ring and locking slide

990 322 000



**90° circular grille housing**

Wall or ceiling installation, includes, O-ring and locking slide

990 322 060



**Straight circular grille housing**

Wall or ceiling installation, includes, O-ring and locking slide

990 322 061



**Renoventil housing**

Length 400mm eccentric, connects to Flat 51

990 322 062



**Rigid twin duct – 1.5m**

Connects unit manifolds to walls, floors and ceilings

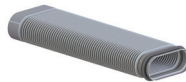
990 322 020



**Flexible connector**

Bends duct to 45° to connect to rigid twin duct

990 328 821



**Rigid twin duct connector**

Includes 4 seals

990 322 023



**Rigid twin duct horizontal 90° bend**

Includes 4 seals

990 322 021



**Rigid twin duct vertical 90° bend**

Includes 4 seals

990 322 022



**Rigid twin duct adaptor**

To convert rigid twin duct to Ø 160mm round pipe, includes 3 seals

990 322 025



**Rigid twin duct adaptor**

To convert rigid twin duct to Ø 125mm round pipe, includes 3 seals

990 322 029



**Rigid twin duct double adaptor**

To connect 2 x rigid twin duct to Ø 180mm pipe

990 322 028



**Rigid twin duct seal – 10 pieces**

For sealing twin duct

990 322 026

