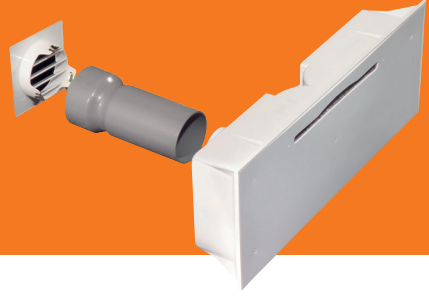




MA3051

Acoustic wall ventilator



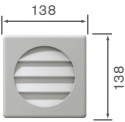
Physical specification

All measurements in millimetres unless otherwise indicated

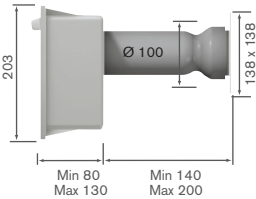
Weight: 2.65kg

Materials:

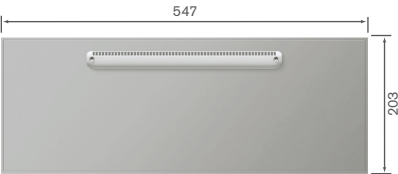
PVC: Casing for wall vent, duct, external grille and internal ventilator. Acoustic lining and material inside wall vent.



External grille



Side



Internal

Features and benefits

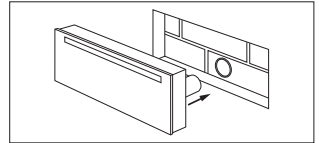
- Highest performing acoustic background ventilator
- Provides acoustic attenuation to $D_{n,e,w}$ 55dB(A)
- 2500mm² equivalent area performance
- Suitable for external wall thicknesses of 140mm and above
- Can be installed in internal wall constructions of between 100mm and 150mm
- Supplied with internal controllable vent and white/sand external grilles
- Conforms to acoustic requirements of Noise Insulation Regulations (NIR) 1975, one of only a small number of products available in the UK

Installation

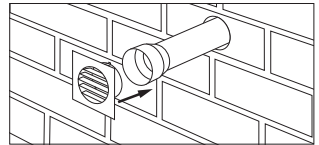
Instructions are provided with product including wall template for cut out.

Bonding compound is required to complete installation.

Protective strip to protect internal unit until decoration is complete within dwelling.

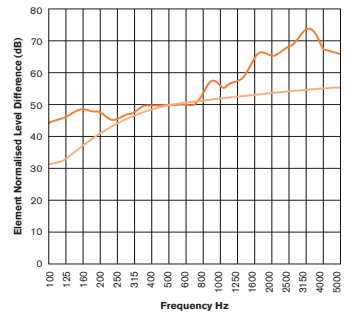


Push into cut out in wall.



Push fit external grille.

Performance



Key

MA3051

NIR 1975

Acoustic performance

$D_{n,e,w}$: Average weighted performance across frequency range
C: Pink noise
Ctr: Road noise

Models, control options and key data

Product code	Operation	Acoustic performance			Equivalent area mm ²
		$D_{n,e,w}$	$D_{n,e,w}$ (C)	$D_{n,e,w}$ (Ctr)	
MA3051 *	Internal controllable trickle ventilator	55dB	54dB	52dB	2500

* Pricing is variable depending on quantity ordered - please call for details