

# Halo Range Shower Fan & Light Kit

High performance ceiling fan for showers

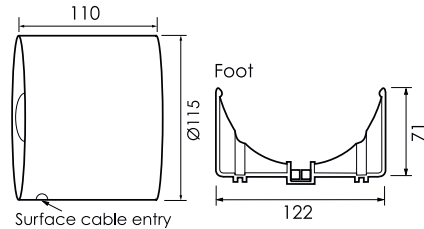


## Features and benefits

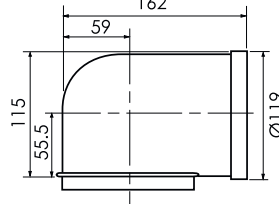
- Complete shower fan kit including with inline fan, ducting and light included
- Basic and timer options
- 90° bend included for installing between joists in ceiling voids
- Both light fitting and fan are IPX4 rated
- 12V (SELV) lamp
- Chrome grille option available (HCBC)



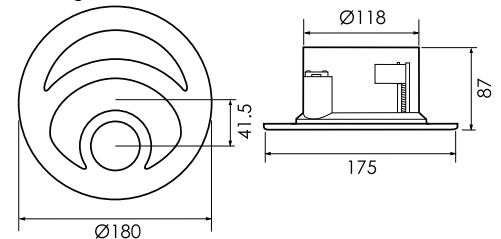
Shower Fan



90° Bend



Elite Light Unit



## Models, control options and key data

\*Sound pressure level measured @ 3 metres

Product code	Control operation	Voltage	IP	Performance in free air		Sound pressure dB(A)*	Price ex. VAT (£)
				m <sup>3</sup> /h	l/s		
HC115BBK	Kit comprising basic induct fan, internal grille with 12V light unit, LV light transformer, 90° bend, 3 metres of Flexiduct, 4 fixing clips, outlet grille and fixing screws. Single speed	230	X4	200	56	31	£80.45
HC115TBK	Kit comprising induct fan with adjustable timer, internal grille with 12V light unit LV light transformer, 90° bend, 3 metres of Flexiduct, 4 fixing clips, outlet grille and fixing screws. Single speed	230	X4	200	56	31	£91.28
H115SL	Options to replace 12V light unit, LV light transformer and 90° bend	230	X4	-	-	-	£41.15
HCBC	Chrome internal grille	-	-	-	-	-	£10.26

### Physical specification

All measurements in millimetres unless otherwise indicated

- Weight:** 0.92kg
- Materials:** ABS white plastic
- Ceiling Fixing Hole:** 145mm diameter

### Installation

- Shower Fan:** 230V~50Hz class II
- Consumption:** 20W
- 12V Light:** 12V~50Hz class II
- Lamp:** 12V diachronic lamp rated at 20W, 36° beam angle. GE Lighting Type: M269
- Consumption:** 20W (SELV)
- Cabling:** Ø 1.5mm<sup>2</sup> max

### Performance

