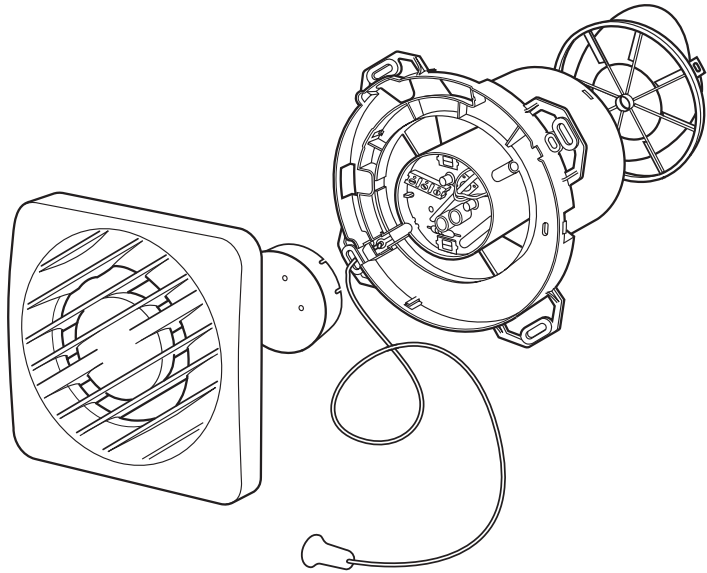


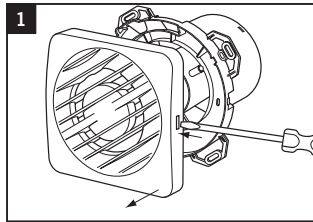
# Installation Instructions for Axial Fans for Bathroom, Toilets, Utility Rooms and Kitchens

## AXS100, AXS100SELV, AXS125, AXS150 & AXSK

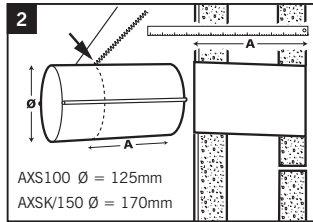


### WALL MOUNTING

(Using ED wall duct and EG external grille, 100mm and 150mm only)

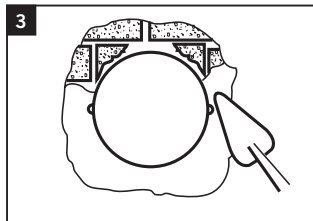


Remove one piece Internal Grille using screwdriver. Push in to free catch then twist to remove grille.

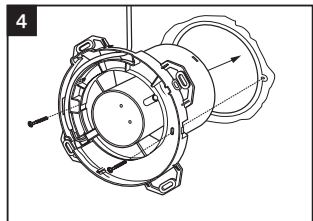


AXS100 Ø = 125mm  
AXSK/150 Ø = 170mm

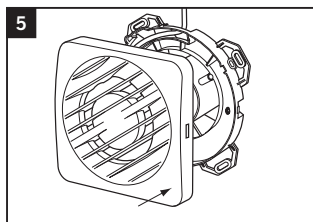
Cut the duct to width of the plasterboard or tiled wall with slight fall to exterior. (Make provisions for cable).



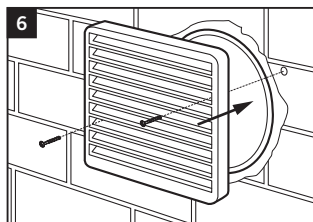
Fill in any gaps with mortar or foam and make good internal and external walls. Make sure that ducting remains circular and screw holes are horizontal.



Using No 8 screws, secure fan body to ducting first making sure back draught shutter is fitted, if required, and electrical cable passes through as appropriate. Wire fan (See wiring details).



Replace internal grille ensuring no wires are trapped.



Screw the protective wall grille over the external duct opening.

### READ ALL INSTRUCTIONS BEFORE COMMENCING INSTALLATIONS

**Warning:** The appliance is not intended for use by young children or infirm persons unless they have been adequately supervised by a responsible person to ensure that they can use the appliance safely. Young children should be supervised to ensure that they do not play with the appliance.

- Observe appropriate safety precautions if working on steps or ladders. Wear eye protection when breaking out wall or window materials etc.

- Siting Notes:** Where an open-flued oil or gas-fuelled appliance is installed in the kitchen, extract ventilation can cause the spillage of flue gases. Care must be taken to ensure ventilation is reduced as appropriate, as set out in the building regulations. The guide to the regulations suggests that the reduced provision should be an extract rate

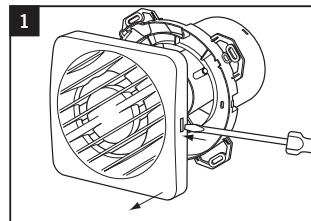
20 l/s (72 m<sup>3</sup>/h) maximum. Kitchens with solid-fuel appliances should not have extract fans fitted.

- The fans should not be sited where it would be subject to a direct source of heat in excess of 40°C.
- When installing wall mounted fans, ensure that there are no buried cables or pipes in the way. It is recommended that this fan is mounted 1.8m above floor level.

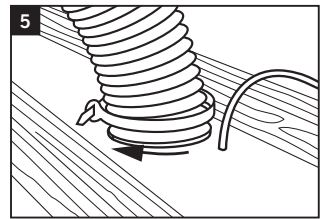
- A clearance of 75mm to be allowed on at least one side of the fan for the removal of the internal grille.

- Cleaning Notes:** Always isolate from the mains before cleaning. Do not use solvents to clean the fan. Wipe the front grille clean using a damp cloth avoiding getting any water into the internal fan unit.

### CEILING MOUNTING



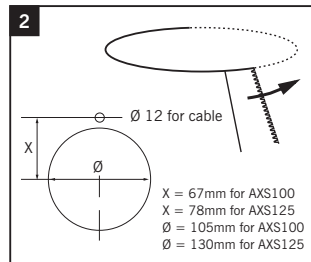
Remove one piece Internal Grille using screwdriver. Push in to free catch then twist to remove grille.



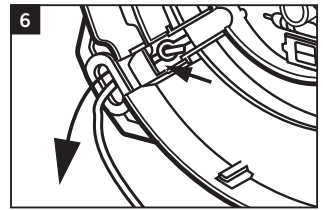
Fit ducting to spigot using ties supplied, making sure impeller rotates freely.

Maximum duct length to comply with Building Regulations:

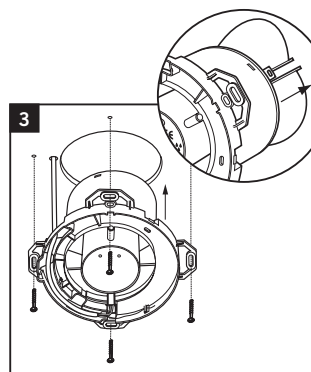
AXS100: 3m  
AXSK/150: Wall mounting only



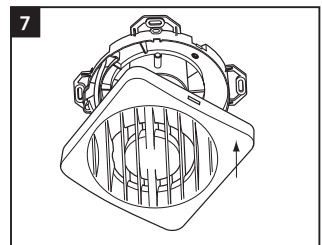
Cut an opening through the ceiling for the fan and electrical cable.



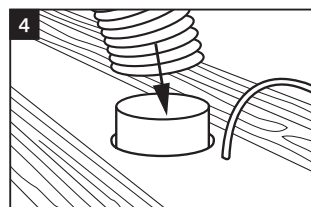
Detach the cord from the PCB by pulling the cord through the pull cord's link.



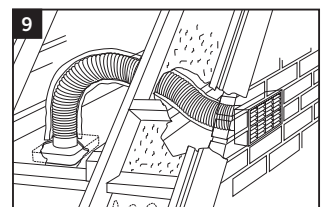
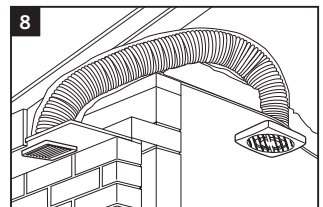
Secure to ceiling using suitable screws first making sure backdraught shutters are removed but shutter spider is left in position. Wire fan (See wiring details).



Replace internal grille ensuring no wires are trapped.

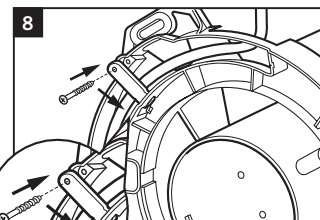
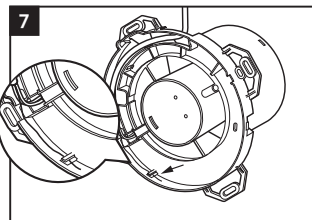
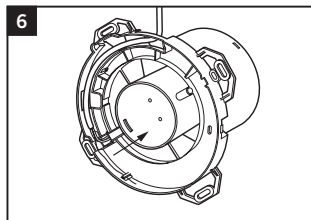
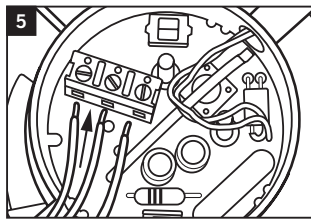
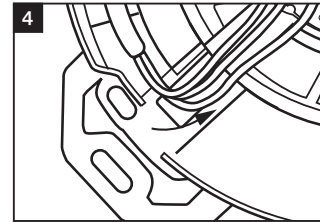
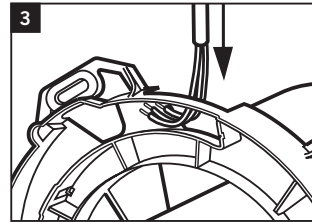
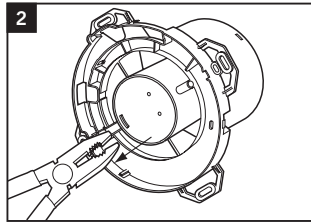
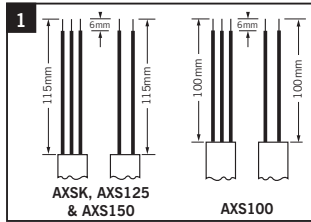


Place flexible ducting over the spigot of the fan.



# Installation Instructions for AXS100, AXS100SELV, AXS125, AXS150 & AXSK Axial Fans

## WIRING DETAILS



Before commencing wiring remove centre safety cover over PCB using a pair of pliers. Before replacing centre safety cover, after wiring, make sure the pull cord link is located correctly behind the PCB as shown (inset diagram 5). Refit safety cover on completion of wiring by pushing home.

**Note:** If cable is supplied with earth core

this can be cut to the same length and 'parked' as shown in diagram 7. If fixed flat cable is used or flexible cable which is secured with suitable wall fixings the cable clamp is not required. If flexible cable is used without suitable fixings use cable clamp and screw supplied loose with the fan (diagram 8).

For SELV fans only  
Maximum cable length between fan and controller:

|                     |                |
|---------------------|----------------|
| Conductor Size      | Maximum length |
| 0.75mm <sup>2</sup> | 2.3m           |
| 1.00mm <sup>2</sup> | 3.0m           |

## WIRING DIAGRAMS

The electrical connections must be carried out by a qualified electrician in accordance with IEE or local regulations.

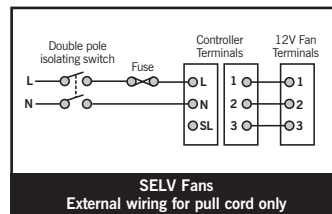
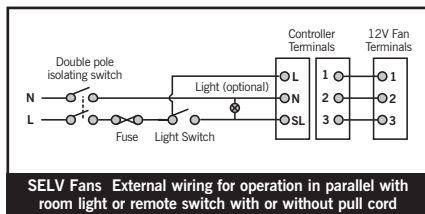
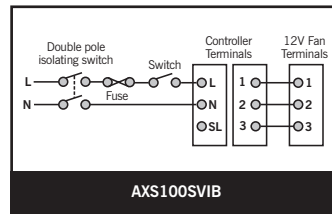
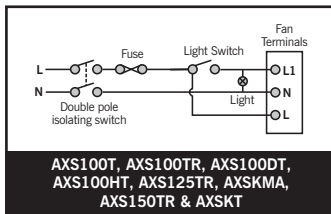
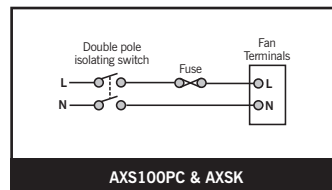
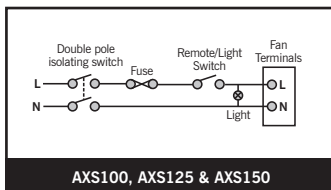
**WARNING:** Isolate electricity supply before starting work.

- The fans are double insulated and do not require an earth connection.
- The fans must be connected to a double pole isolating switch having contact separation of at least 3 mm.
- When supplied from a 6 amp lighting circuit no local fuse is required.

Specification: 230V~50Hz.  
Consumption: AXS100 16W, AXS100SVI 19W, AXS125 28W, AXSK/150 33W

Cable Sizes:  
Fixed flat wiring  
2 core 1mm<sup>2</sup>  
3 core 1/1.5mm<sup>2</sup>

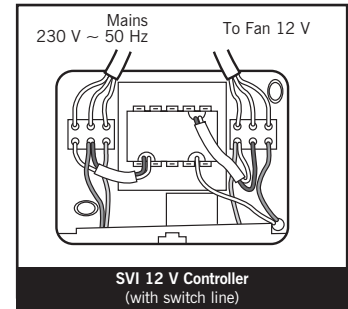
Flexible round wiring  
2 core 0.75mm<sup>2</sup>  
3 core 0.75mm<sup>2</sup>



## SELV FANS ONLY TO WIRE THE CONTROLLER

Remove the electrical cover. Make all connections to the connector blocks. **Note:** Mains cable must be fixed back to the wall using appropriate cable cleats.

Replace electrical cover **Note:** Do not fit more than one fan to the controller or connect with any other product. This equipment must be sited away from direct water spray and heat in excess of 40°C the controller must not be sited within reach of a person using a bath or shower nor within a shower cubicle/enclosure.



## SENSOR/TIMER ADJUSTMENTS

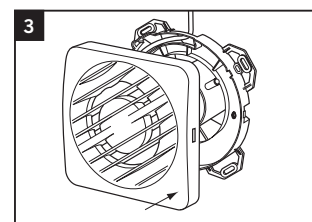
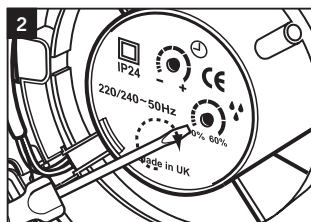
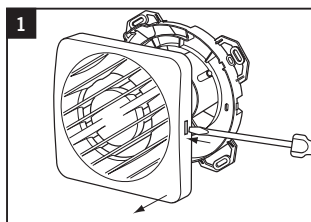
**Note:** Isolate from mains before commencing work/adjusting timer.

The removal of the wiring cover and setting of temperature and humidity controls may only be carried out by a Qualified Electrician in accordance with local regulations.

- Remove one piece Internal Grille using screwdriver. Push in to free catch then twist to remove grille.
- The timer is pre-set but may be adjusted by using a screwdriver and rotating clockwise to increase time and anti-clockwise to reduce time overrun.

The humidity sensor is pre-set but may be adjusted by using a screwdriver and rotating clockwise to increase the sensitivity and anti-clockwise to reduce the sensitivity.

- After adjustments replace Internal Grille by pushing home.



## TO CLEAN OR SERVICE FAN

The only user servicing required with this fan is the removal and cleaning of the front grille.

- Remove one piece Internal Grille using screwdriver. Push in to free catch then twist to remove grille.
- The fan may now be cleaned using a brush or damp cloth. **DO NOT IMMERSE IN WATER.**
- After cleaning replace Internal Grille by pushing home.

**WARNING:** Always isolate fan from mains supply before cleaning. Do not use solvents to clean this fan.